

# Molinza<sup>400mg</sup> Tablets [Moxifloxacin]

Rapid Action, Rapid Recovery,  
Rapid Relief

R<sub>x</sub>

Because,

- Molinza** has rapid onset of action
- Molinza** provides faster relief to the patient.
- Molinza** provides faster recovery to the patient.
- Molinza** covers all the causative pathogens involve in upper and lower respiratory tract infection.

#### Brief prescribing information

**INDICATION:** Indicated for treatment of adults (>18 years of age) with upper & lower respiratory tract infection such as acute sinusitis, acute exacerbations of chronic bronchitis, community acquired pneumonia, skin & soft tissue infections. **CONTRAINDICATION:** Hypersensitivity to any component of the tablets or other quinolones. **ADVERSE EFFECT:** Nausea, Diarrhea, Dizziness and conjunctival irritation. **DOSAGE & ADMINISTRATION:** The recommended dose for moxifloxacin is (400mg) once daily, or as directed by the physician. **Children:** Not recommended.



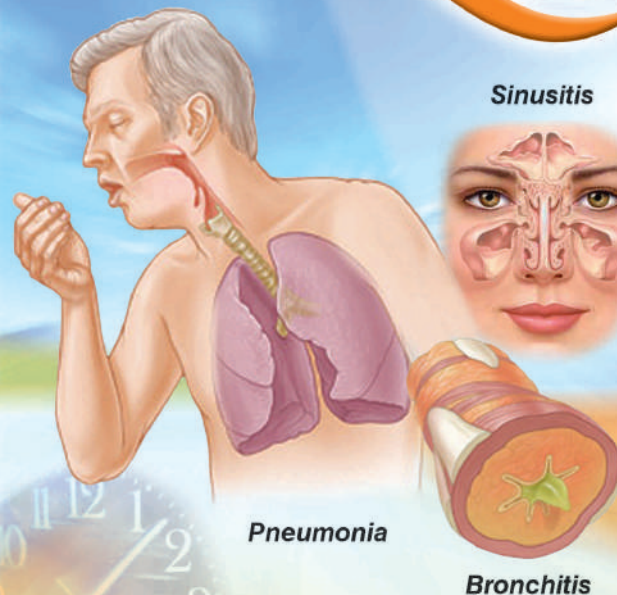
'Medicines For All'



Zafa Pharmaceutical Laboratories (Private) Limited.  
L-1/B, Block-22, FEDERAL 'B' INDUSTRIAL AREA, KARACHI-75950 (PAKISTAN)  
Email: zafaph@cyber.net.pk, Website: www.zafa.com.pk



## Just 3 Hours... 3 Actions...



get complete...?

# Molinza 400mg Tablets

[Moxifloxacin]

Rapid Action, Rapid Recovery,  
Rapid Relief



## Faster onset of Action

Moxifloxacin concentrations (mean ± sd) in tissues and the corresponding plasma concentrations after a single 400mg oral or intravenous dose

Tissue of Fluid	N	Plasma Concentration (µg/ml)	Tissue or Fluid Concentration (µg/ml or µg/g)	Tissue Plasma Ratio
-----------------	---	------------------------------	---	---------------------

### RESPIRATORY

Alveolar Macrophages	5	3.3 ± 0.7	61.8 ± 27.3	61.8 ± 27.3
Bronchial Mucosa	8	3.3 ± 0.7	5.5 ± 1.3	5.5 ± 1.3
Epithelial Lining Fluid	5	3.3 ± 0.7	24.4 ± 14.7	24.4 ± 14.7

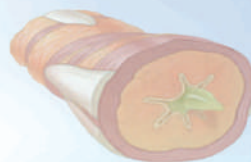
### SINUS

Maxillary Sinus Mucosa	4	3.7 ± 1.1 †	7.6 ± 1.7	7.6 ± 1.7
Anterior Ethmoid Mucosa	3	3.7 ± 1.1 †	8.8 ± 4.3	8.8 ± 4.3
Nasal Polyps	4	3.7 ± 1.1 †	9.8 ± 4.5	9.8 ± 4.5

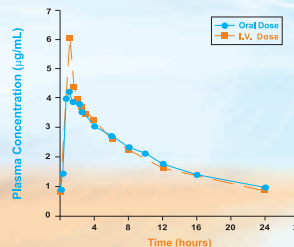
# Molinza 400mg Tablets

[Moxifloxacin]

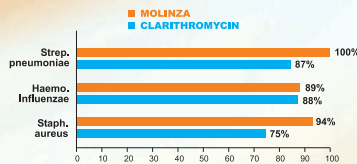
Rapid Action, Rapid Recovery,  
Rapid Relief



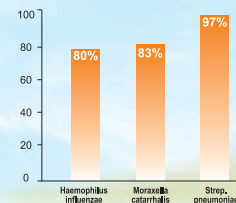
Mean Steady-State Plasma Concentrations of Moxifloxacin obtained with once daily dosing of 400mg either orally (n=10) or by I.V. Infusion (n=12)



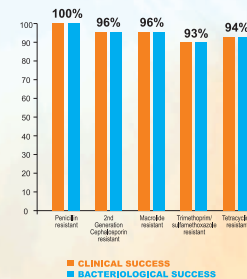
### Acute Bacterial Exacerbation of Chronic Bronchitis



### Acute Bacterial Sinusitis



### Community Acquired Pneumonia caused by Multi-Drug Resistant Streptococcus pneumoniae (MDRSP)\*



■ CLINICAL SUCCESS  
■ BACTERIOLOGICAL SUCCESS