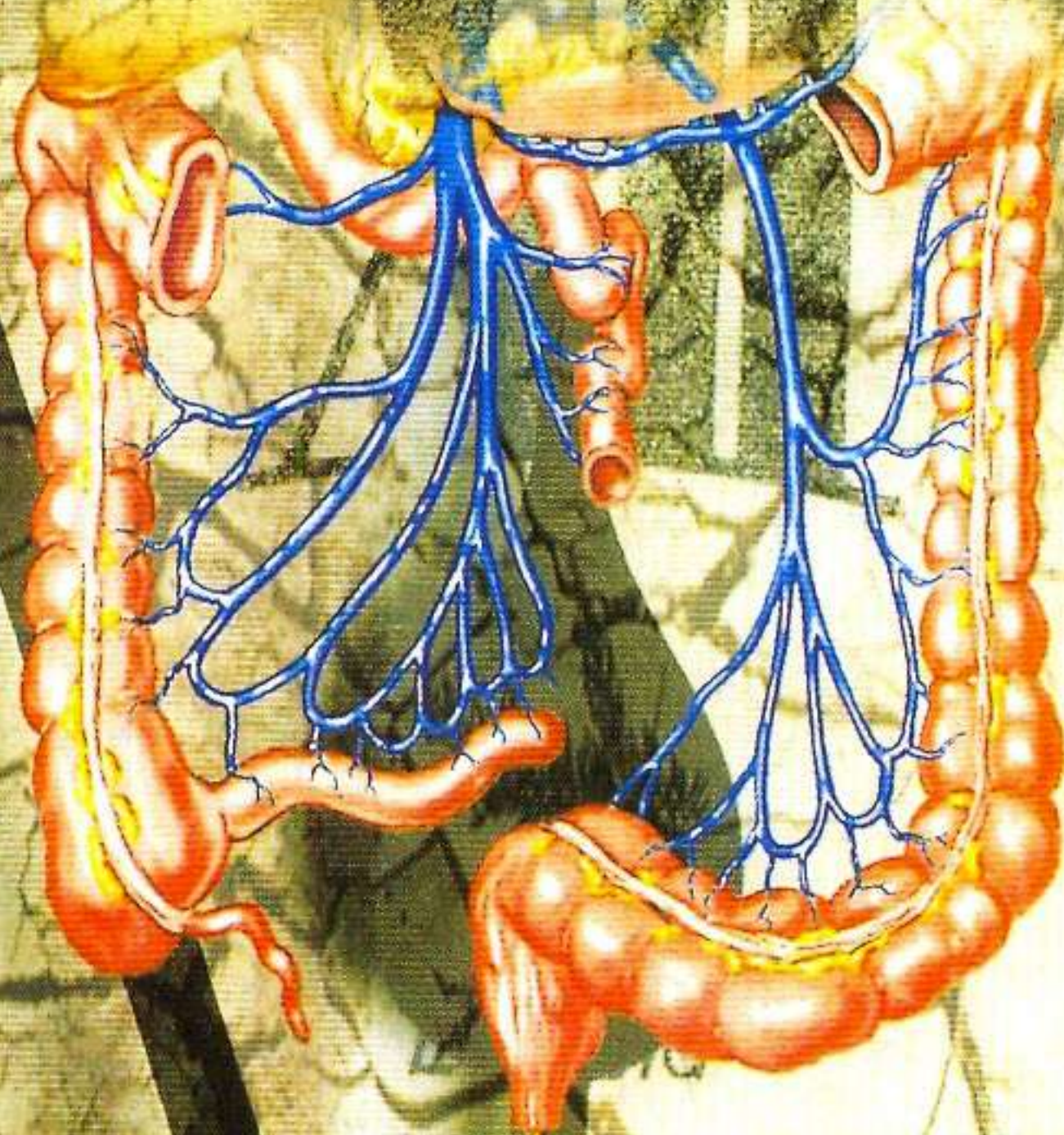


***Stop Diarrhoea
Before it
Deteriorates***



FLORAMEX

(Loperamide HCl) CAPSULES

**For the control and symptomatic relief of acute nonspecific diarrhoea
 chronic diarrhoea associated with inflammatory bowel disease
 ...and for reducing the volume of discharge from ileostomies**

✪ **Effectively controls diarrhoea**

In acute nonspecific diarrhoea and in chronic diarrhoea associated with inflammatory bowel disease

✪ **Direct action**

Inhibits peristaltic activity by a direct effect on the intestinal wall

✪ **Contains no atropine**

Floramex is a single-entity antidiarrhoeal agent

✪ **Well tolerated**

Low incidence of side effects

✪ **Compatible with a wide range of medications**

Such as antibiotics, sulfonamides, corticosteroids, antihypertensives, barbiturates, tranquilizers

✪ **Simple, individualized dosage schedule**

2 Capsules STAT; followed by 1 capsule after each unformed stool, not to exceed 8 capsules/day

DOSAGE AND ADMINISTRATION:

Acute diarrhoea: The recommended initial dose of FLORAMEX is two capsules (4 mg) followed by one capsule (2mg) after each unformed stool. Daily dosage should not exceed eight capsules (16 mg). Clinical improvement is usually observed within 48 hours. **Chronic Diarrhoea:** The recommended initial dosage of FLORAMEX is two capsules (4 mg) followed by one capsule (2 mg) after each unformed stool until diarrhoea is controlled, after which the dosage of FLORAMEX should be reduced to meet individual requirements. When the optimal daily dosage has thus been established, this amount should then be administered as a single dose or in divided doses. **DESCRIPTION:** Each FLORAMEX capsule contains (2mg) loperamide hydrochloride, 4-(4-chlorophenyl)-4-hydroxy-N, N dimethyl -@, @, diphenyl -l-piperidinebutanamide monohydrochloride, which is a synthetic antidiarrhoeal for oral use. **CONTRAINDICATIONS:** FLORAMEX is contraindicated in patients with known hypersensitivity to the drug and in those in whom constipation must be avoided. **WARNINGS:** Antiperistaltic agents should not be used in acute diarrhoea associated with organisms that penetrate the intestinal mucosa, e.g. toxigenic E. coli, Salmonella, Shigella, and in pseudomembranous Colitis associated with broad-spectrum antibiotics. **PRECAUTIONS:** Safe use of FLORAMEX in pregnancy has not been established. It is not known whether FLORAMEX is excreted in human milk. Safety and effectiveness in children have not been established. Therefore, use of FLORAMEX is not recommended in the paediatric age group.



HOW AVAILABLE:

Pack of 20 Capsules

ZAFA Pharmaceutical Laboratories (private) Limited.

L-1/B, Block 22, FEDERAL "B" INDUSTRIAL AREA,
 KARACHI, PAKISTAN. e-mail : zafaph@attglobal.net

